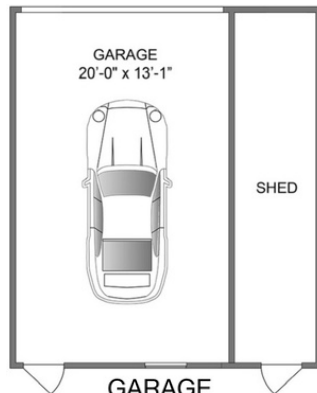


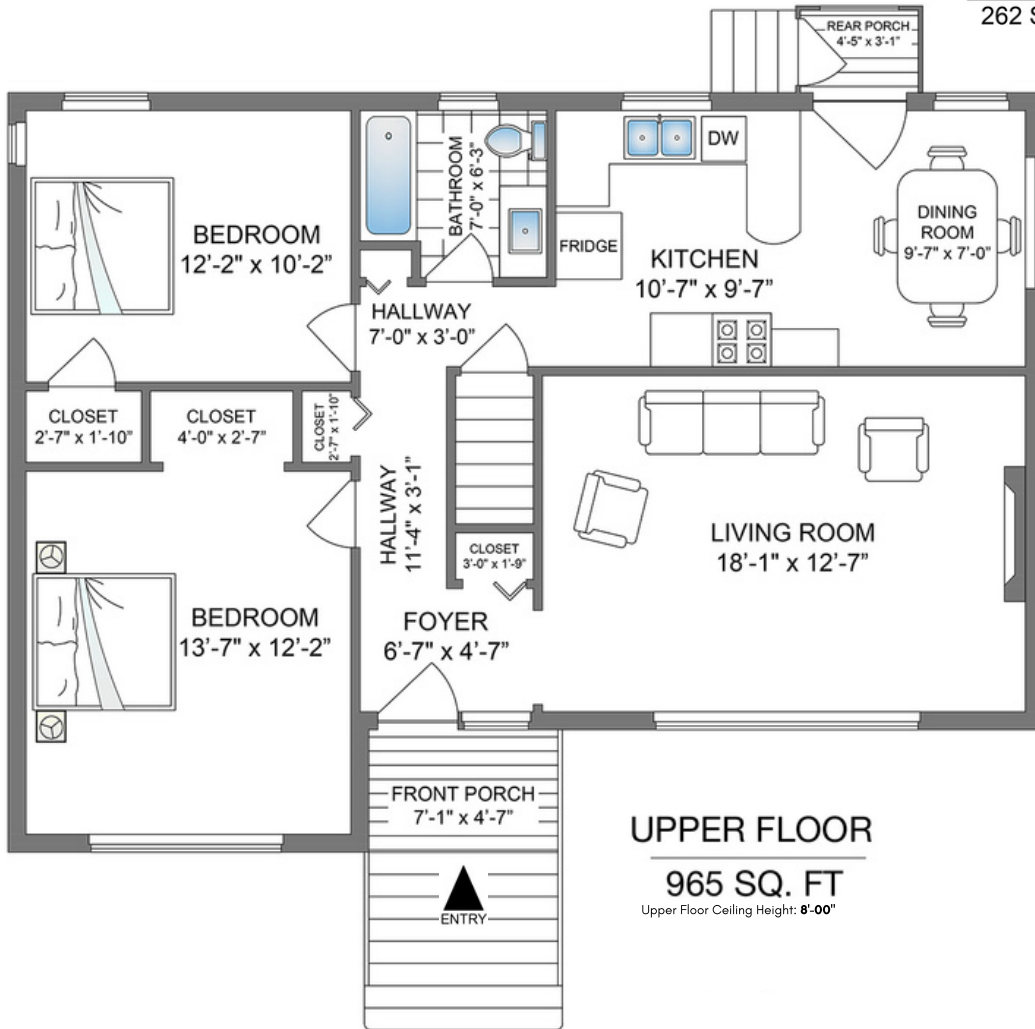
Upper Floor: 965 Sq. ft.
 Lower Floor: 911 Sq. ft.
Total Area: 1,876 Sq. ft.
 Garage: 262 Sq. ft.
 Cold Storage: 27 Sq. ft.
 Front Porch: 34 Sq. ft.

**438 East 20th Avenue
 Vancouver, BC, V5V 1M5**

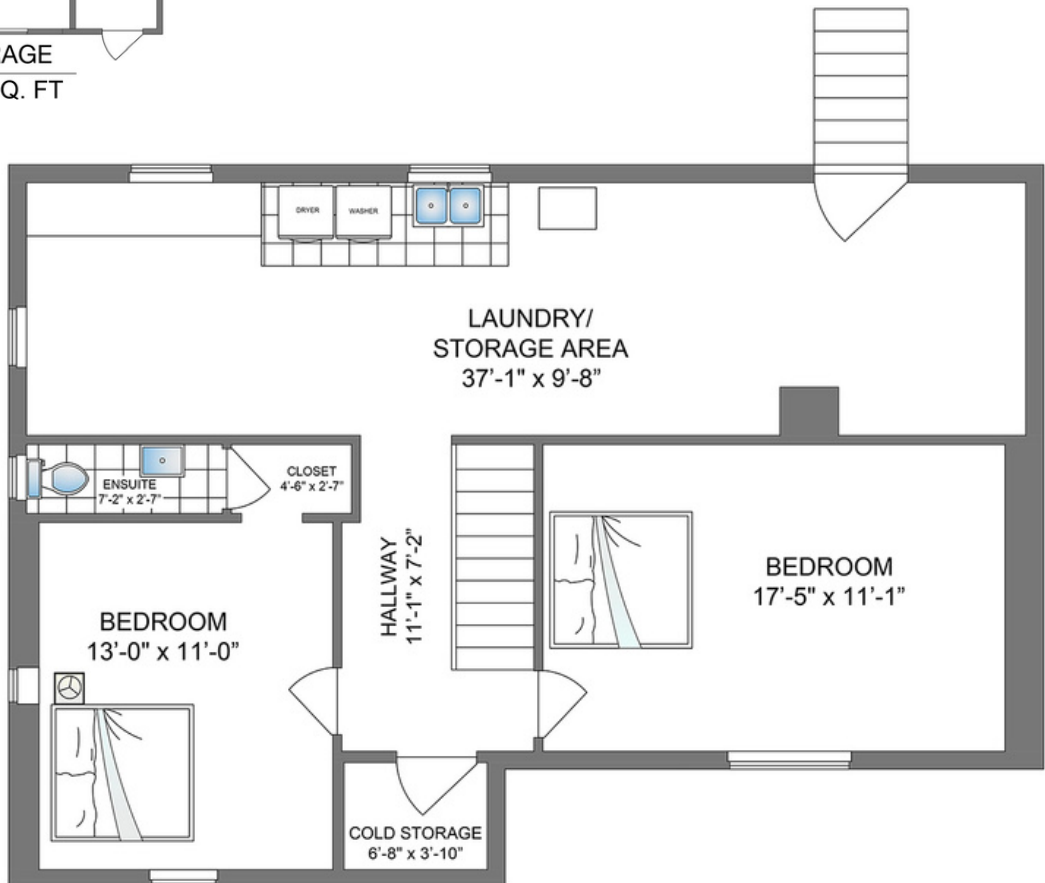
P.I.D: 015-626-342
 A.J.R: 09-200-015-696-197-38-0000
 Year Built: 1954
 Land Size: 6,039 Sq.ft. (49.5 ft X 122 ft)



**GARAGE
262 SQ. FT**



**UPPER FLOOR
965 SQ. FT**
 Upper Floor Ceiling Height: 8'-00"



**LOWER FLOOR
911 SQ. FT**
 Lower Floor Ceiling Height: 7'-00"



WWW.REALTYSTUDIOS.CA

House Entrance: N
 Developed On: May 24, 2022 - Valid Until: May 24, 2023

ENGEL & VÖLKERS
 Booked on the Pixlink App™

This floor plan is intended for marketing purposes only and should not be used nor relied upon for architectural or construction. Total area is based on interior measurements inclusive of exterior walls and open to below areas, while the information contained within this floor plan is deemed to be correct it is not guaranteed. Adding rooms sizes will not match the total square footage. Total square footage has not been taken from the blueprint. This floor plan is covered under E&O (5% M.O.E) and cannot be reproduced, published, or distributed (in whole or parts) or incorporated with any other work. All room dimensions and floor areas must be considered approximate and are subject to independent verification. All rights reserved for Realty Studios & Growth X Media. Garage total square footage is inclusive of 6 inch walls.