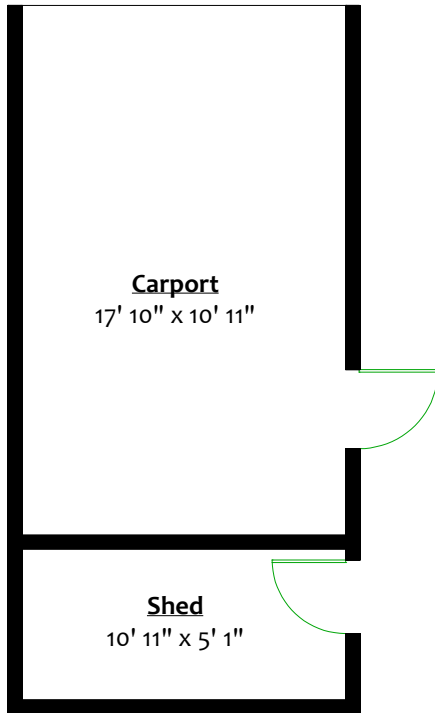


# 3566 West 17<sup>th</sup> Avenue, Vancouver

## Totals\*\*

Main Level:	943 sq. ft.	Porch:	20 sq. ft.
Upper Level:	237 sq. ft.	Patio:	217 sq. ft.
Total:	1,180 sq. ft.	Juliet Balcony:	15 sq. ft.
		Shed:	71 sq. ft.
		Carport:	212 sq. ft.
		Total:	535 sq. ft.



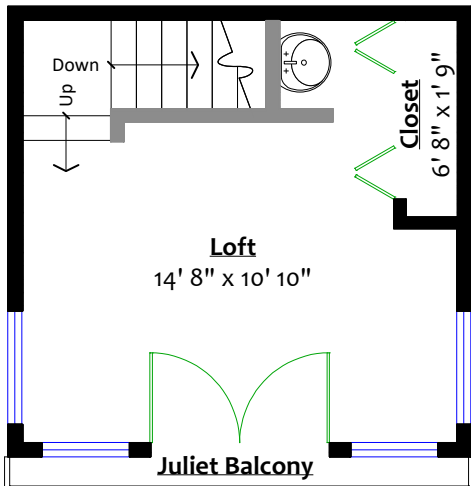
### CARPORT

Floor Area: 212 Sq. Ft.

### SHED

Floor Area: 71 Sq. Ft.

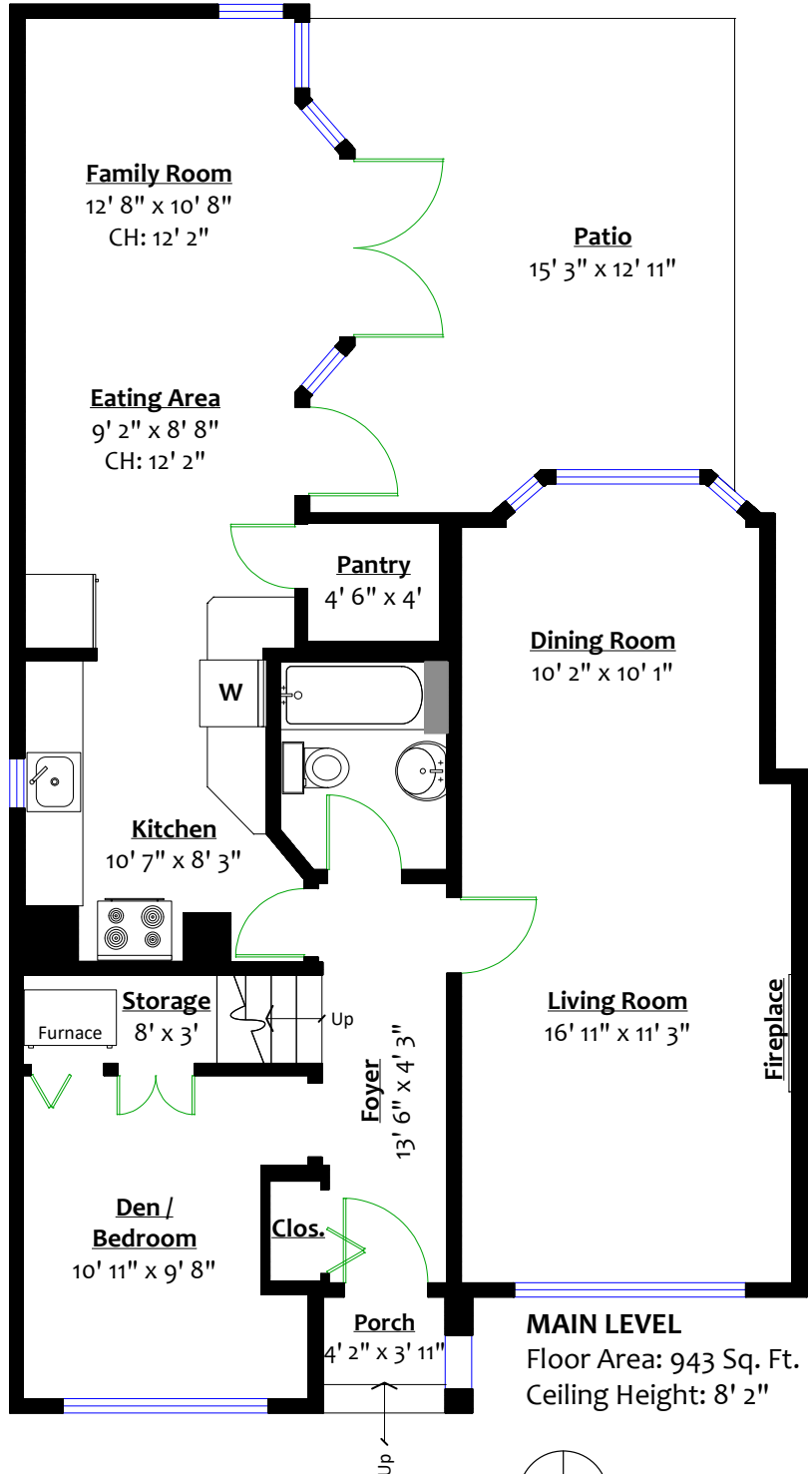
Ceiling Height: 7"



### UPPER LEVEL

Floor Area: 237 Sq. Ft.

Ceiling Height: 10'



### MAIN LEVEL

Floor Area: 943 Sq. Ft.

Ceiling Height: 8' 2"

