

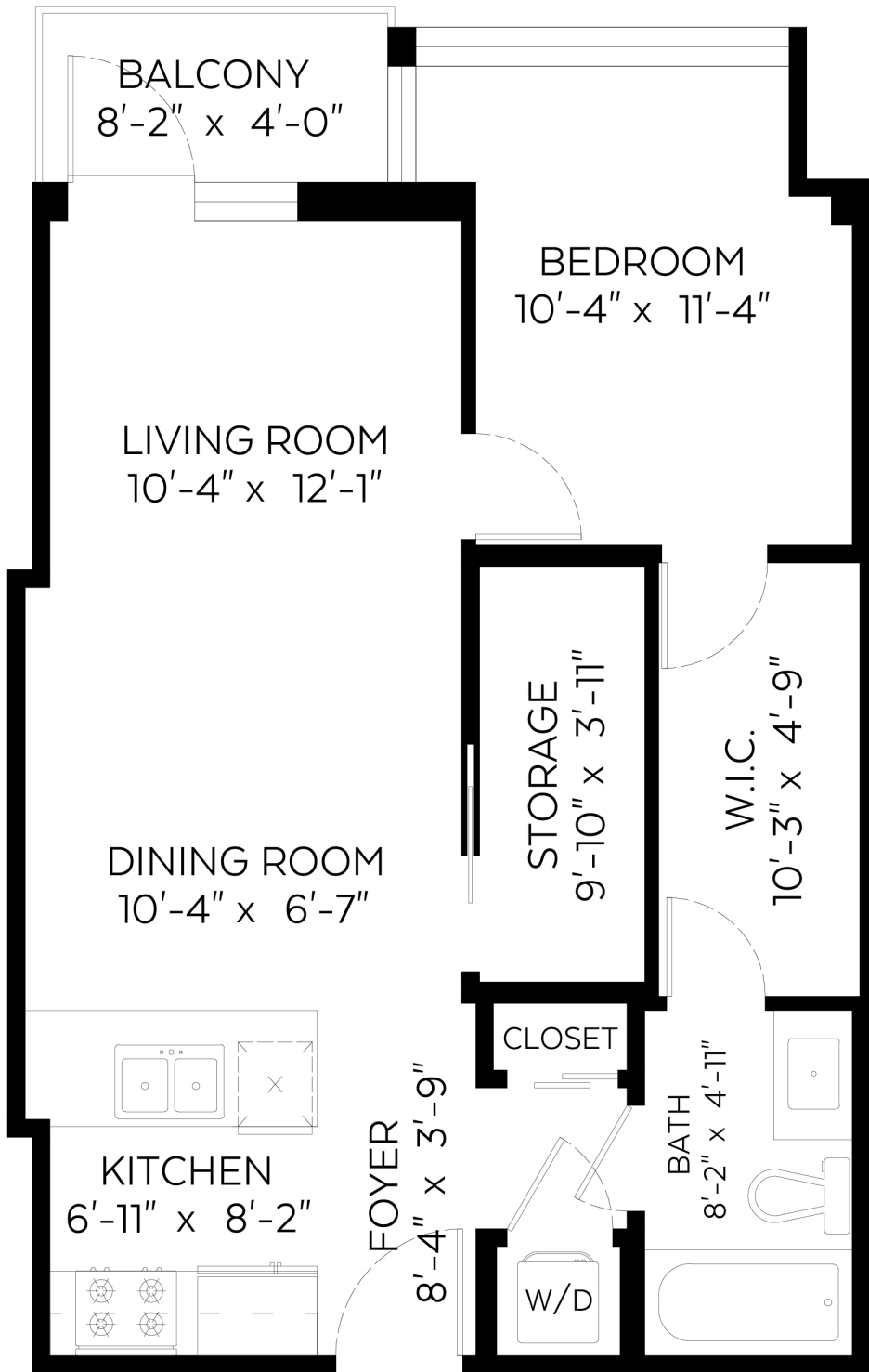
#704-1887 Crowe Street,  
Vancouver, B.C.

Main Floor: 608 sq.ft.

Auxiliary Area

Balcony: 33 sq.ft.

SCALE  
0' 5'



Valid Until: May 21, 2022



The floor plan is not suitable for architectural/construction and is covered under E&O. © Excelsior Measuring Inc. 2021. All rights reserved for Excelsior Measuring Inc. Users shall not publish and distribute such material (in whole or in part) and/or incorporate it in other works in any form.

