

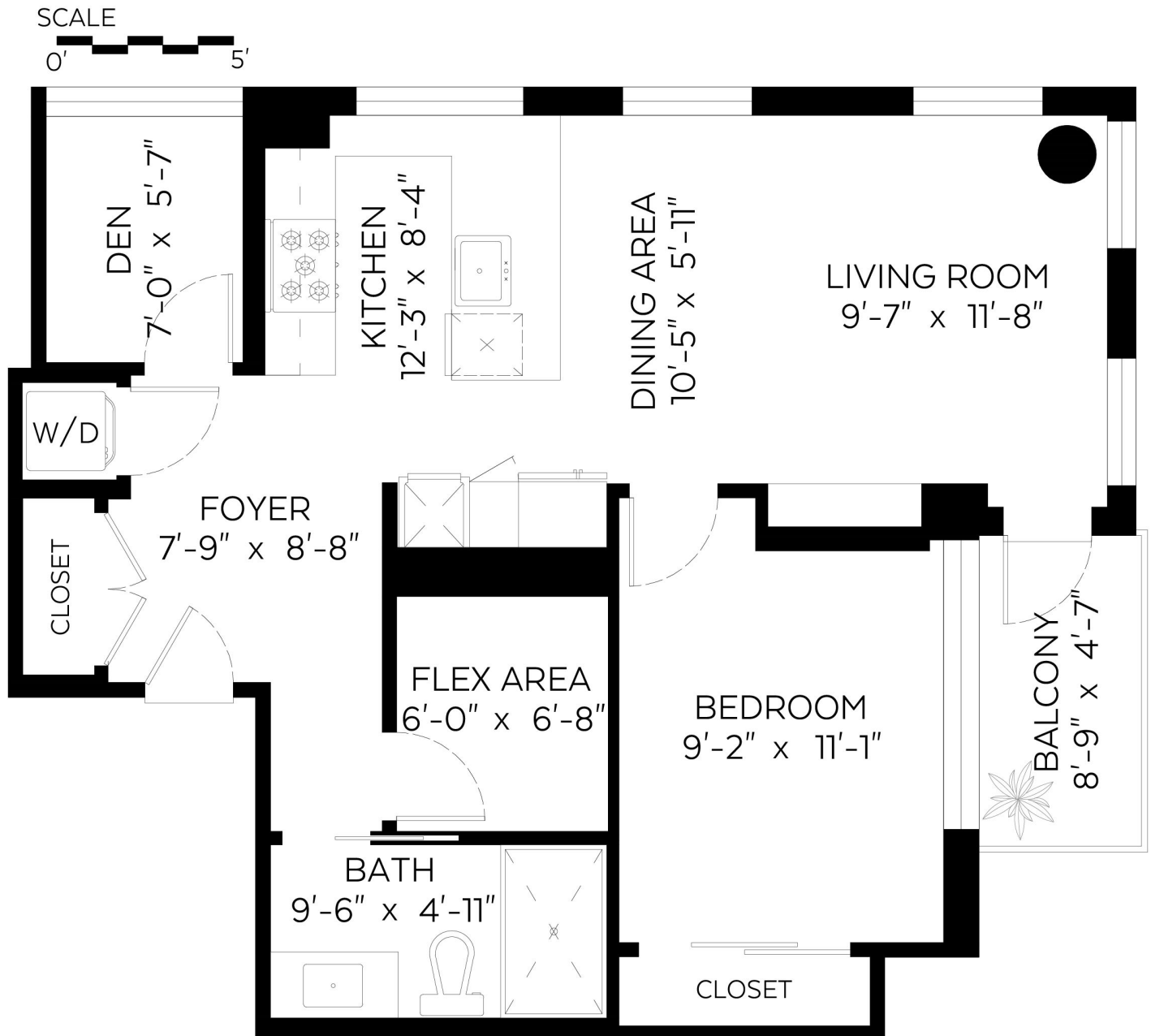
#302-1351 Continental Street,
Vancouver, B.C.

Main Floor: 719 sq.ft.

Ceiling Height: 8'-4"

Auxiliary Area

Balcony: 40 sq.ft.



Valid Until: April 03, 2022

The floor plan is not suitable for architectural/construction and is covered under E&O. © Excelsior Measuring Inc. 2021. All rights reserved for Excelsior Measuring Inc. Users shall not publish and distribute such material (in whole or in part) and/or incorporate it in other works in any form.

