



**POLLY REITZE**  
**PERSONAL REAL ESTATE CORPORATION**

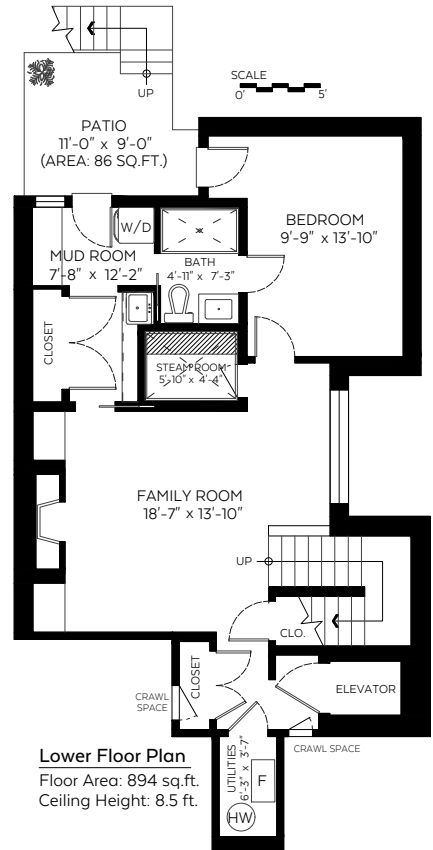
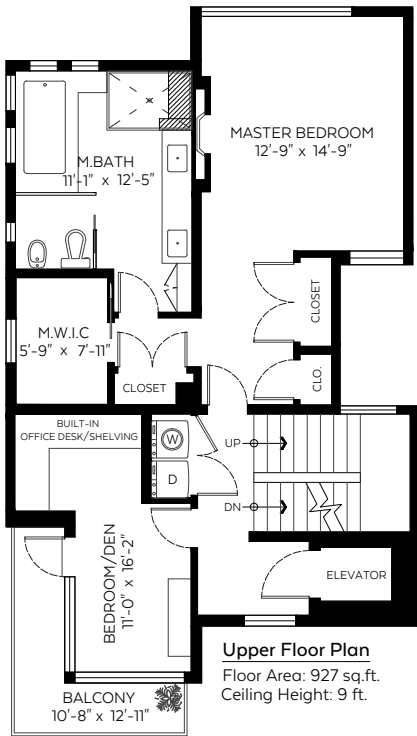
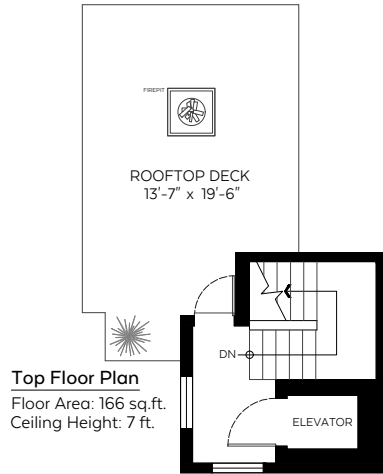
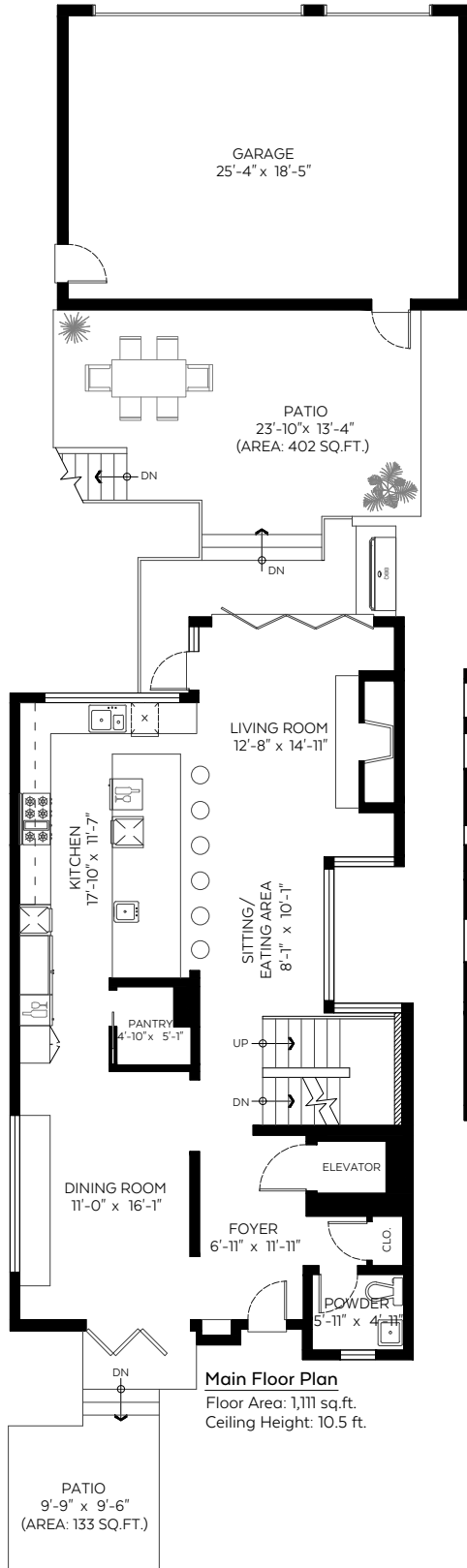
604.671.7076  
 pollyreitze@gmail.com  
**ENGEL & VÖLKERS**

1995 Whyte Avenue,  
 Vancouver, B.C.

Main Floor:	1,111 sq.ft.
Upper Floor:	927 sq.ft.
Top Floor:	166 sq.ft.
Lower Floor:	894 sq.ft.
<b>Total:</b>	<b>3,098 sq.ft.</b>

**Auxiliary Area**

Garage:	527 sq.ft.
Patios:	621 sq.ft.
Roof Deck:	262 sq.ft.
Balcony:	64 sq.ft.



Measured on: October 19, 2020

The floor plan is not suitable for architectural/construction and is covered under E&O. © Excelsior Measuring Inc. 2020. All rights reserved for Excelsior Measuring Inc. Users shall not publish and distribute such material (in whole or in part) and/or incorporate it in other works in any form.