



# ENGEL & VÖLKERS

1920 Haro Street, Vancouver, B.C.

Main Floor:	759 sq.ft.
Upper Floor:	721 sq.ft.
Top Floor:	224 sq.ft.
Lower Floor:	110 sq.ft.

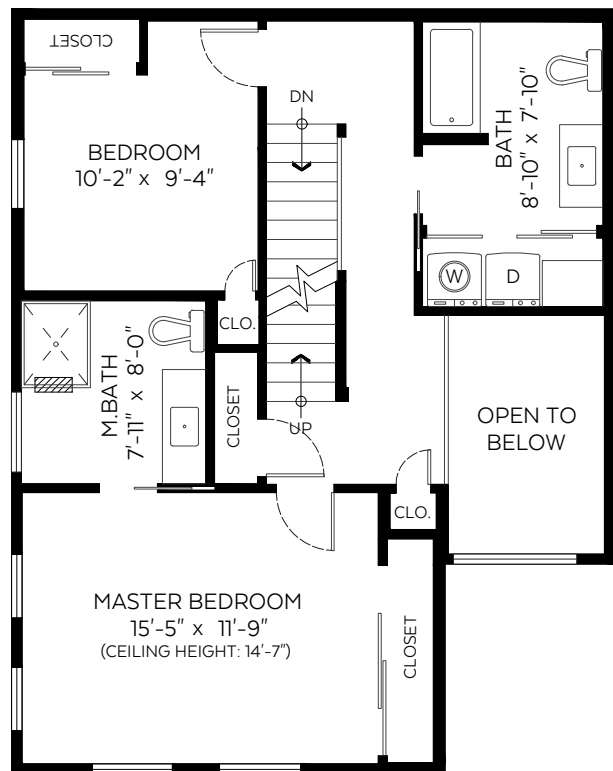
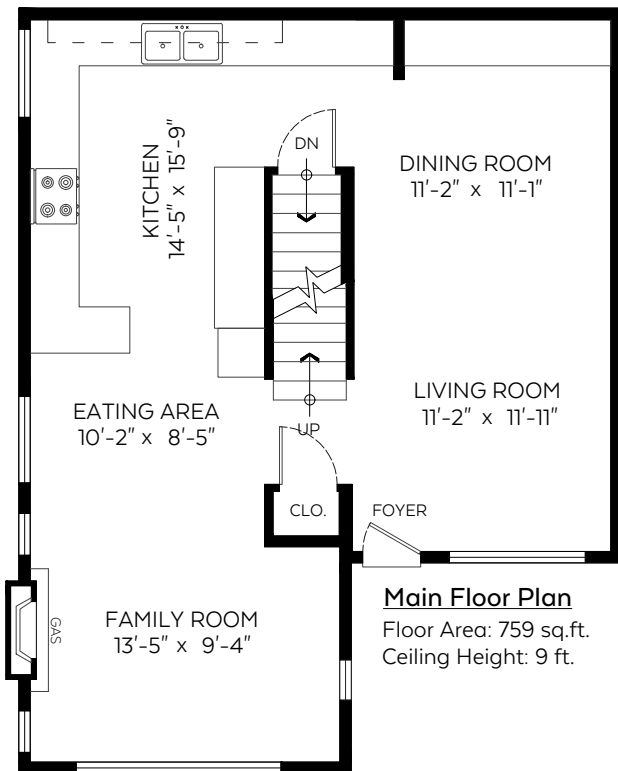
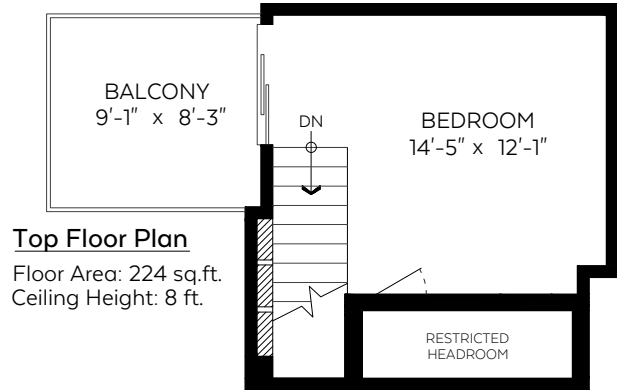
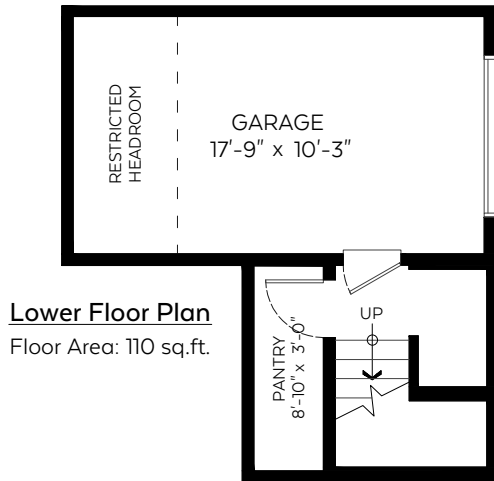
### Auxiliary Area

Garage*:	207 sq.ft.
Balcony:	75 sq.ft.

**Total:** 1,814 sq.ft.

Restricted H.R.:	34 sq.ft.
Open to Below:	78 sq.ft.

\*GARAGE SQ.FT. INCLUDES RESTRICTED HEADROOM



Valid Until: November 10, 2021



ENGEL & VÖLKERS

The floor plan is not suitable for architectural/construction and is covered under E&O. © Excelsior Measuring Inc. 2021. All rights reserved for Excelsior Measuring Inc. Users shall not publish and distribute such material (in whole or in part) and/or incorporate it in other works in any form.



NORTH

