

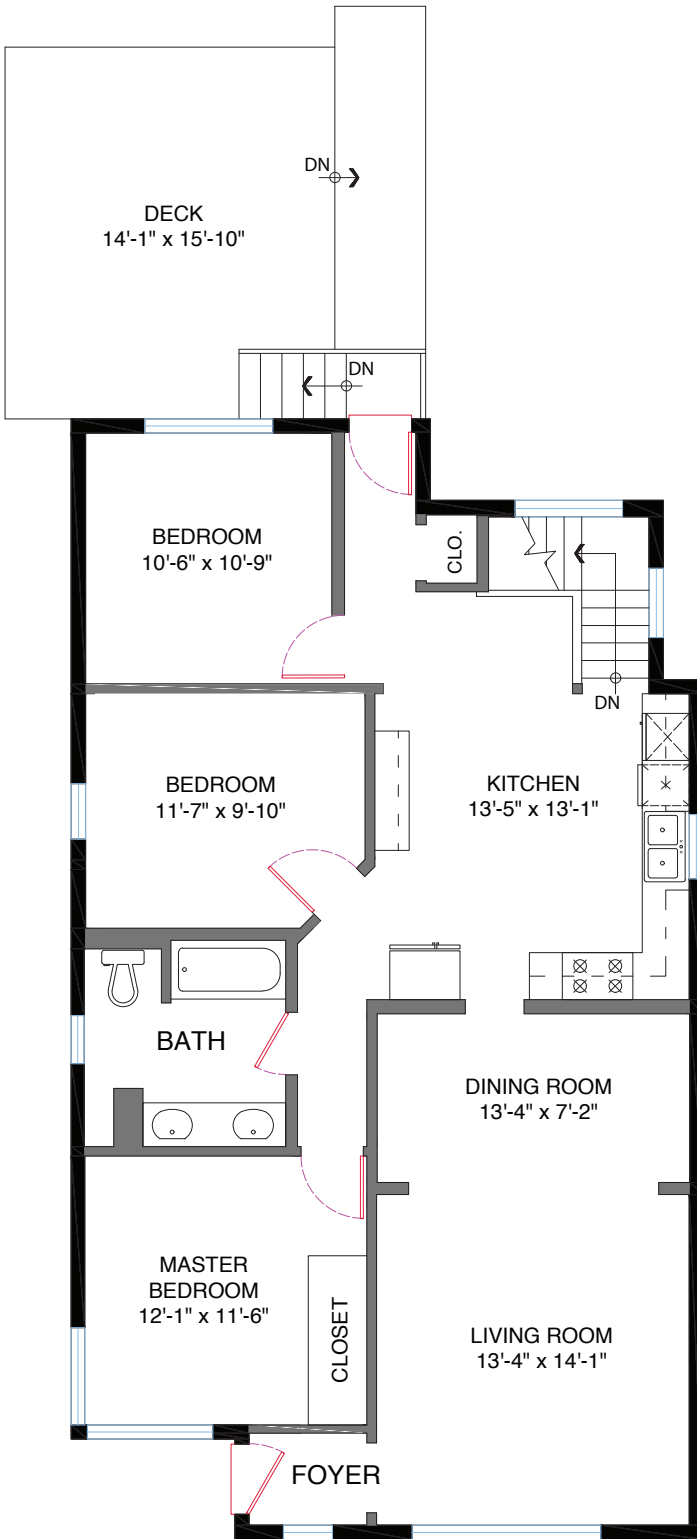
3438 E 24th Avenue
Vancouver, BC

Main Floor: 1,205 sq.ft. | 111.95 sq.m.

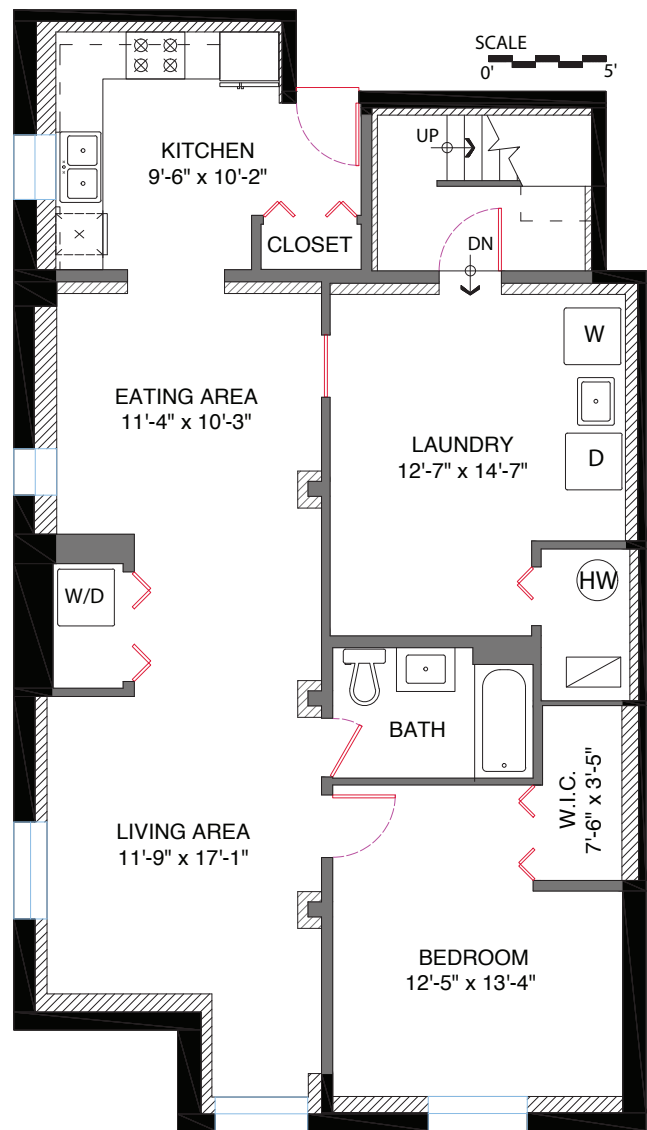
Lower Floor: 1,194 sq.ft. | 110.93 sq.m.

Total: 2,399 sq.ft. | 222.87 sq.m.

Deck: 234 sq.ft. | 21.74 sq.m.



Main Floor Plan
Floor Area: 1,205 sq.ft.
Floor Area: 111.95 sq.m.



Lower Floor Plan
Floor Area: 1,194 sq.ft.
Floor Area: 110.93 sq.m.

The floor plan is not suitable for architectural/construction, square footage-method ANSI Z765 used & is covered under E&O