

#904 – 5051 Imperial Street, Burnaby, B.C.

Totals**

Main Level: 1,111 sq. ft.

Deck: 392 sq. ft.

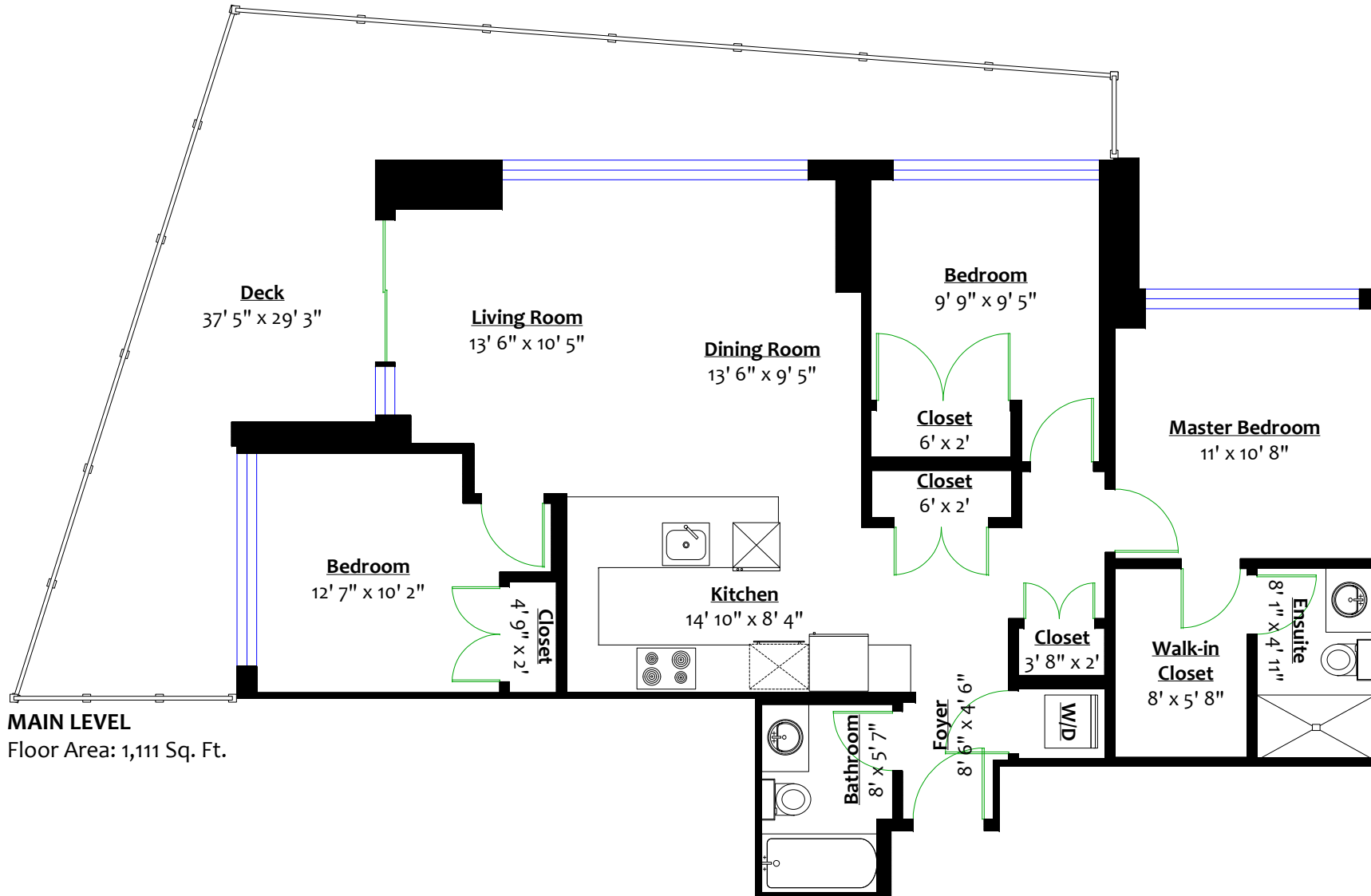


LEO WILK

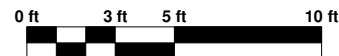
REAL ESTATE

MLA REALTY

Personal Real Estate Corporation
604.729.5203 leo@leowilkrealestate.com



MAIN LEVEL
Floor Area: 1,111 Sq. Ft.



** Approx. based on interior measurements to exterior walls
** Total square footage not taken from original blueprints